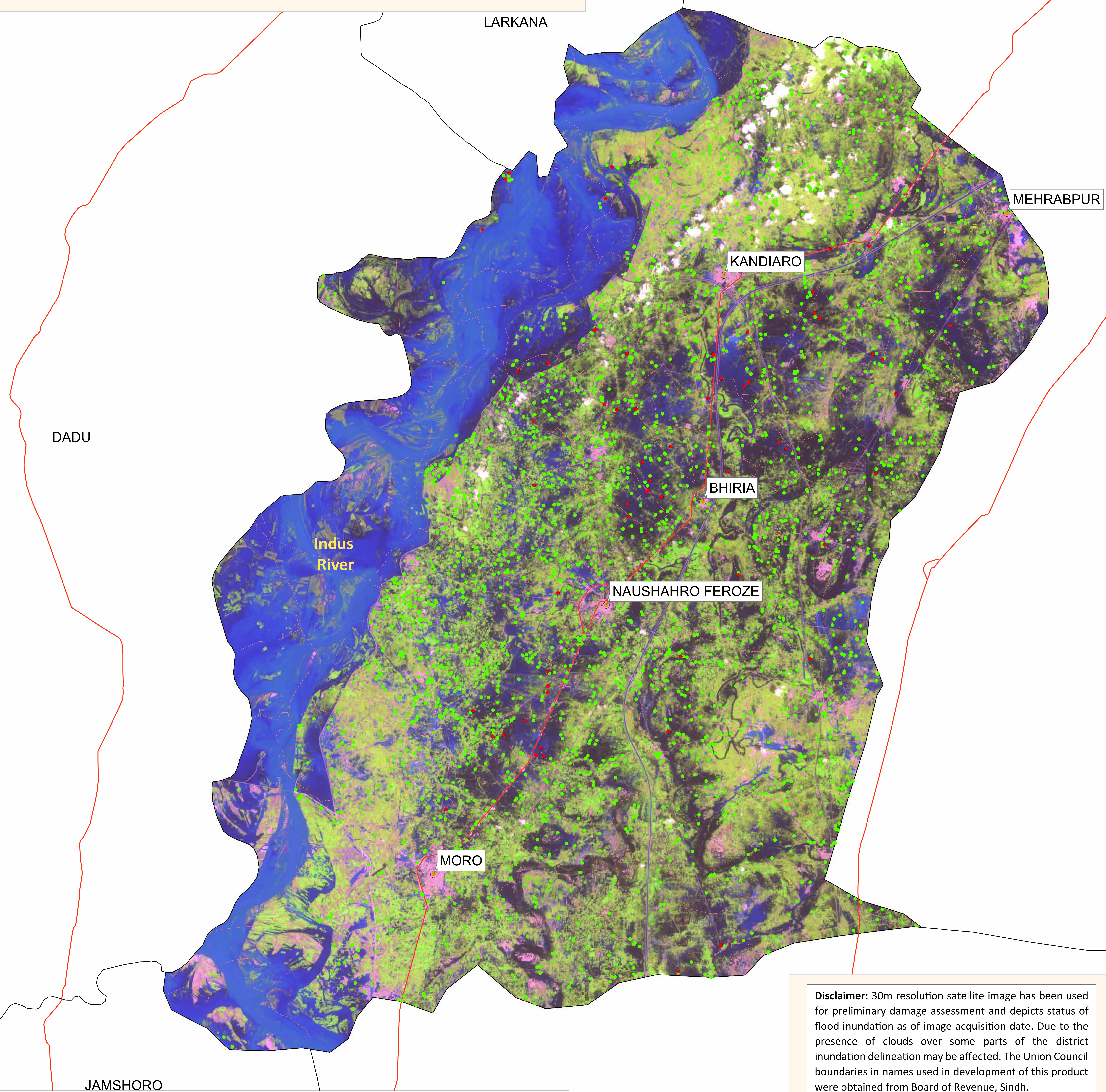
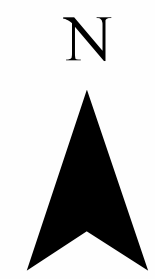


Flood Inundation in Naushahro Feroze District

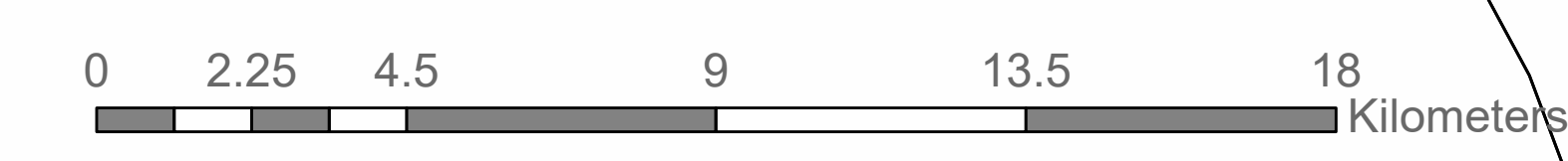


District Profile		
District Area	3025.48 Sq.Km	
Area Inundated	904.57 Sq.Km	29.90%
Crop Land	596111.6 Acres	
Crop Land Inundated	142452.66 Acres	23.90%
Rainfall (Jul-Aug)	603 mm	
Population (as per 2017 Census)	1,644,344	
Affected Union Councils	68 Out of 68	

UC-wise Affected Villages		
Name	Submerged in Water (No.)	Surrounded By Water (No.)
BHIRIA CITY	7	57
NOORPUR	7	120
KOTBAHADUR	5	65
GANGHRA	4	56
NAO GOTH	4	12
SAEEDPUR	4	68
CHAHEEN	3	109
MANAHIN	3	62
BHORTI	2	28
DANGEJA	2	105
KHAHI KASSIM	2	85
LAKHA ROAD	2	90
MASURJIWAI	2	39
NAUSHAHRO FEROZE	2	53
PALANO	2	53
BEHLANI	1	61
DARIS	1	45
GHULAM SHAH	1	56
HALANI	1	92
JAM NOORULLAH	1	45
JIANDO RAJPER	1	80
KAMALDERO	1	51
KUR HASSAN	1	56
MEHRABPUR 01	1	10
PADIDAN	1	26
PHULL	1	113
ABAD		37
ABRAN		125
AMIRJI		2
BALI SHAH		4
BANDHI		1
BHAMBHRI		79
BHIRIA ROAD		36
DABHRO		23
DALIPOTA		54
DARYA KHAN MARI		49
DEPAREJA		25
FATOO BALAL		22
GACHERO		45
GHAN GAJU		30
JATOI		57
KAHKAT		31
KHAIRWAH		56
KHANWAHAN		52
KHAR		1
KOTRI MOHAMMAD KABIR		103
LALIA		25
MEHRABPUR 02		7
MITHIANI		22
MOHABAT DERO JAGIR		43
MOLHAN		44
SIAL		12
TALTI		2
THARUSHAH		7

Disclaimer: 30m resolution satellite image has been used for preliminary damage assessment and depicts status of flood inundation as of image acquisition date. Due to the presence of clouds over some parts of the district inundation delineation may be affected. The Union Council boundaries in names used in development of this product were obtained from Board of Revenue, Sindh.

Source: Landsat 9 Collection 1, 28th August, 2022 05:56 GMT



● Cities/Towns --- Union Councils
● Submerged under Water --- Highways
● Surrounded by Water